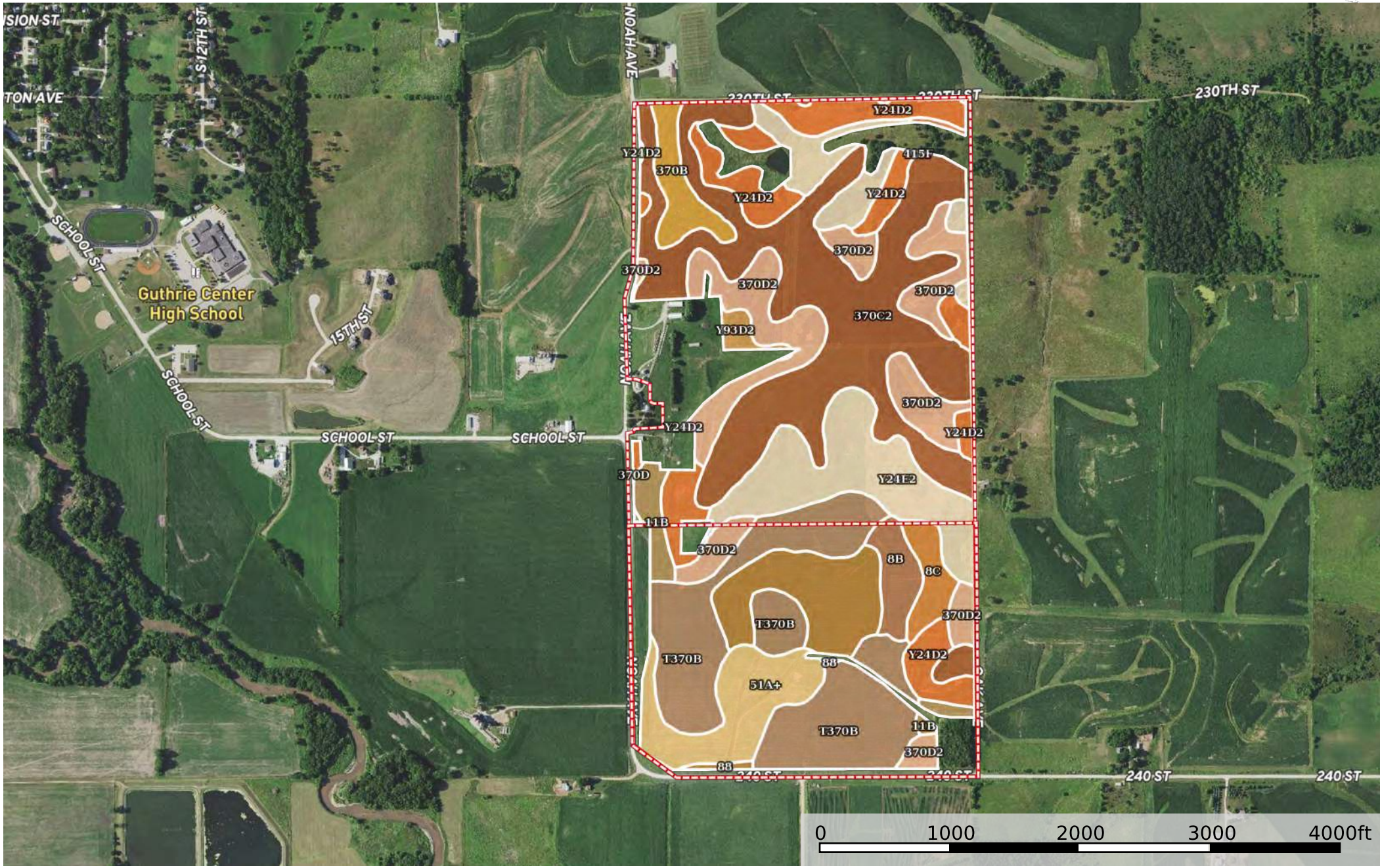


# Finnegan Tract 3

Guthrie County, Iowa, 310 AC +/-



Boundary

| 266.28 ac

SOIL CODE	SOIL DESCRIPTION	ACRES	%	CSR2	CPI	NCCPI	CAP
370C2	Sharpsburg silty clay loam, 5 to 9 percent slopes, eroded	70.34	26.41	80.0	0	85	3e
T370B	Sharpsburg silty clay loam, terrace, 2 to 5 percent slopes	45.92	17.24	91.0	0	91	2e
Y24E2	Shelby clay loam, dissected till plain, 14 to 18 percent slopes, eroded	33.95	12.75	35.0	0	72	4e
370D2	Sharpsburg silty clay loam, 9 to 14 percent slopes, eroded	32.48	12.2	54.0	0	81	3e
Y24D2	Shelby clay loam, dissected till plain, 9 to 14 percent slopes, eroded	26.63	10.0	49.0	0	76	3e
88	Nevin silty clay loam, 0 to 2 percent slopes, rarely flooded	16.87	6.34	95.0	0	99	1
51A+	Vesser silt loam, 0 to 2 percent slopes, overwash, occasionally flooded	15.74	5.91	74.0	0	88	2w
370B	Sharpsburg silty clay loam, 2 to 5 percent slopes	6.55	2.46	91.0	0	93	2e
8B	Judson silty clay loam, dissected till plain, 2 to 5 percent slopes	5.56	2.09	93.0	0	94	2e
11B	Colo-Judson silty clay loams, 0 to 5 percent slopes, occasionally flooded	5.02	1.89	80.0	0	86	2w
8C	Judson silty clay loam, dissected till plain, 5 to 9 percent slopes	4.85	1.82	87.0	0	93	2e
Y93D2	Shelby-Adair clay loams, dissected till plain, 9 to 14 percent slopes, eroded	1.81	0.68	35.0	0	69	3e
415F	Montieth loamy sand, 18 to 30 percent slopes	0.47	0.18	5.0	0	11	7e
370D	Sharpsburg silty clay loam, 9 to 14 percent slopes	0.09	0.03	59.0	0	86	3e
TOTALS		266.29(*)	100%	70.71	-	84.36	2.69









(\*) Total acres may differ in the second decimal compared to the sum of each acreage soil. This is due to a round error because we only show the acres of each soil with two decimal.

## Capability Legend

Increased Limitations and Hazards

Decreased Adaptability and Freedom of Choice Users

Land, Capability

								
	1	2	3	4	5	6	7	8
'Wild Life'	•	•	•	•	•	•	•	•
Forestry	•	•	•	•	•	•	•	
Limited	•	•	•	•	•	•	•	
Moderate	•	•	•	•	•	•		
Intense	•	•	•	•	•			
Limited	•	•	•	•				
Moderate	•	•	•					
Intense	•	•						
Very Intense	•							

### Grazing Cultivation

(c) climatic limitations (e) susceptibility to erosion

(s) soil limitations within the rooting zone (w) excess of water