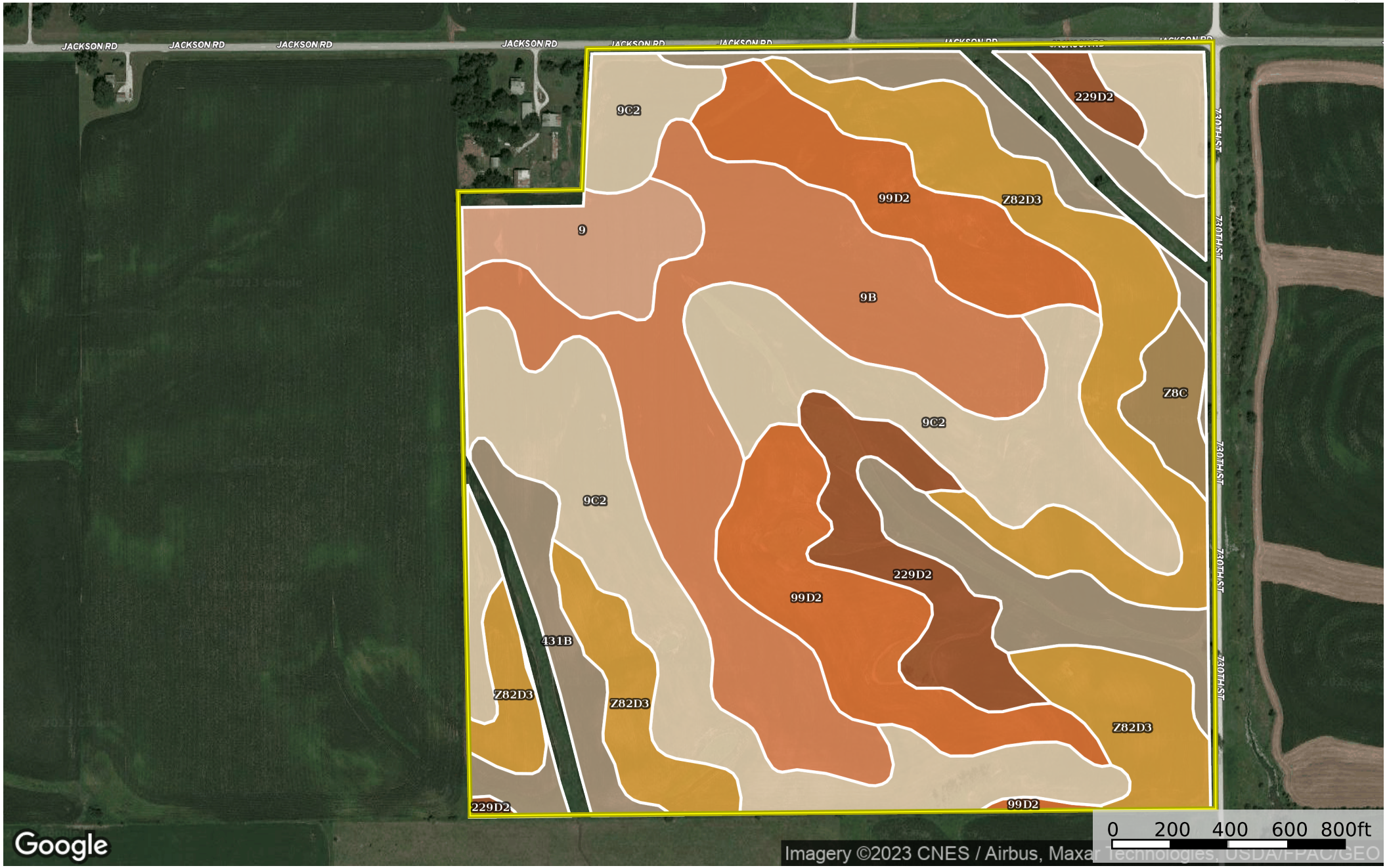



# Cass County 151.40

Cass County, Iowa, 151.4 AC +/-



 Boundary

SOIL CODE	SOIL DESCRIPTION	ACRES	%	CSR2	CPI	NCCPI	CAP
9C2	Marshall silty clay loam, 5 to 9 percent slopes, eroded	37.17	26.12	87.0	0	92	3e
9B	Marshall silty clay loam, 2 to 5 percent slopes	26.27	18.46	95.0	0	89	2e
Z82D3	Adair-Shelby complex, MLRA 107B, 9 to 14 percent slopes, severely eroded	25.59	17.98	32.0	0	57	6e
99D2	Exira silty clay loam, 9 to 14 percent slopes, eroded	19.43	13.65	59.0	0	87	3e
431B	Judson-Ackmore-Colo, overwash complex, 1 to 5 percent slopes	17.41	12.23	81.0	0	86	2e
229D2	Clarinda silty clay loam eroded-severely eroded complex, 9 to 14 percent slopes	8.3	5.83	17.0	0	45	4e
9	Marshall silty clay loam, 0 to 2 percent slopes	5.63	3.96	98.0	0	98	1
Z8C	Judson silty clay loam, deep loess, 5 to 9 percent slopes	2.52	1.77	87.0	0	91	3e
TOTALS		142.32(*)	100%	70.38	-	81.22	3.21

(\*) Total acres may differ in the second decimal compared to the sum of each acreage soil. This is due to a round error because we only show the acres of each soil with two decimal.

