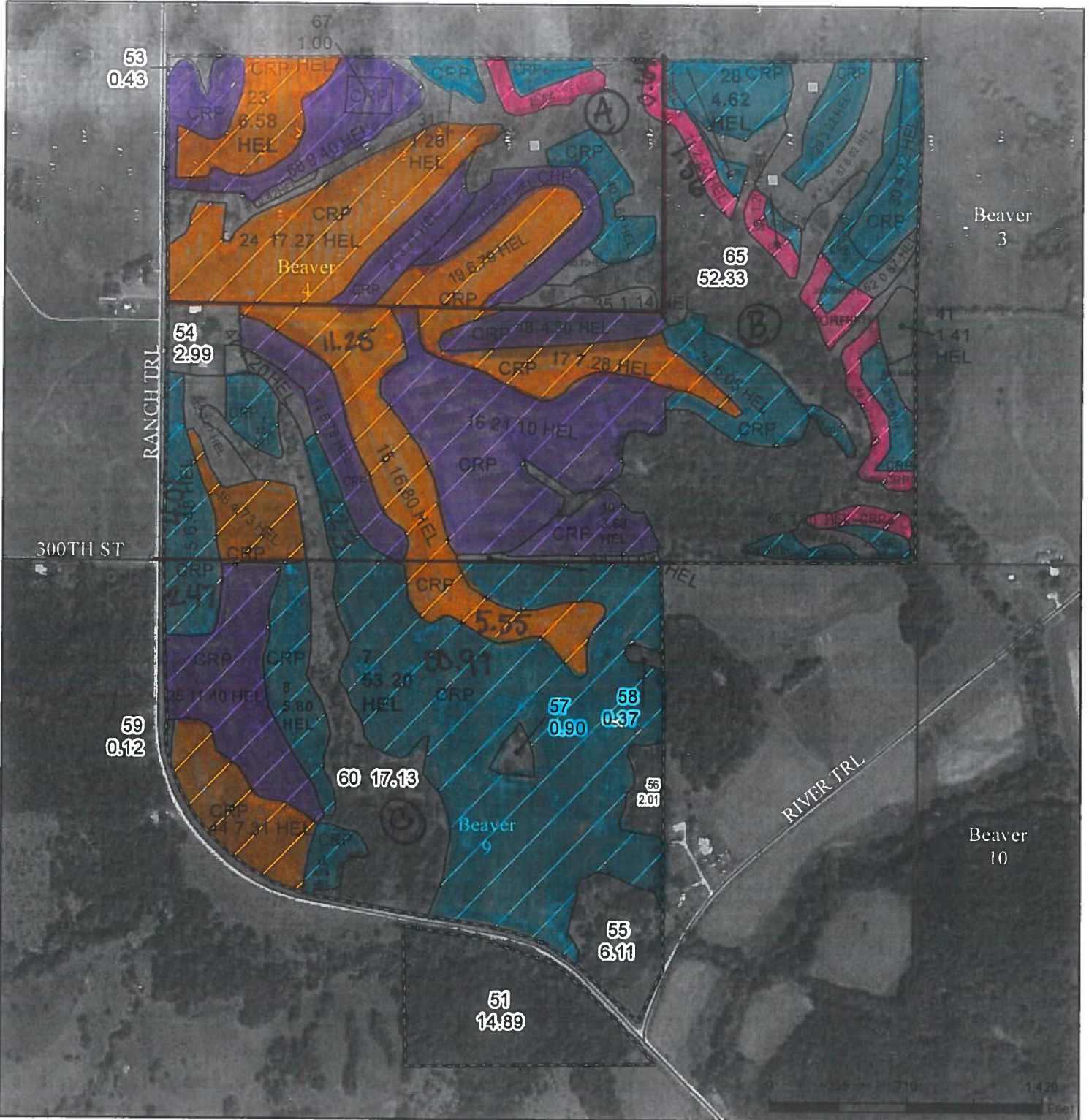




United States
Department of
Agriculture

Guthrie County, Iowa



- Legend**
- Non-Cropland
 - CRP
 - Iowa PLSS
 - Cropland
 - Tract Boundary
 - Iowa Roads

Wetland Determination Identifiers

- Restricted Use
- ▽ Limited Restrictions
- Exempt from Conservation
- Compliance Provisions

Corn/Soybeans are for Grain,
All crops Non-Irrigated, Initial Crop,
Producer Shares:

Tract Cropland Total: 262.67 acres

2023 Program Year

Map Created April 17, 2023

Farm 260
Tract 2304

United States Department of Agriculture (USDA) Farm Service Agency (FSA) maps are for FSA Program administration only. This map does not represent a legal survey or reflect actual ownership, rather it depicts the information provided directly from the producer and/or National Agricultural Imagery Program (NAIP) imagery. The producer accepts the data 'as is' and assumes all risks associated with its use. USDA-FSA assumes no responsibility for actual or consequential damage incurred as a result of any user's reliance on this data outside FSA Programs. Wetland identifiers do not represent the size, shape, or specific determination of the area. Refer to your original determination (CPA-026 and attached maps) for exact boundaries and determinations or contact USDA Natural Resources Conservation Service (NRCS).

USDA is an equal opportunity provider, employer, and lender.

80 Acres					
Field	Acres	Contract	\$/AC	\$	Expires
11	0.90	11241	\$277.59	\$249.83	2031
19	6.79	11125A	\$302.19	\$2,051.87	2025
20	5.31	10142A	\$195.84	\$1,039.91	2023
21	3.71	10142A	\$195.84	\$726.57	2023
23	6.58	11125A	\$302.19	\$1,988.41	2025
24	17.27	11125A	\$302.19	\$5,218.82	2025
26	1.80	11241	\$277.59	\$499.66	2031
31	1.26	12132A	\$154.70	\$194.92	2030
32	1.30	12132A	\$154.70	\$201.11	2030
40	3.60	12132A	\$154.70	\$556.92	2030
67	1.00	10142A	\$195.84	\$195.84	2023
68	9.40	10142A	\$195.84	\$1,840.90	2023
58.92				\$14,764.76	

156 Acres					
Field	Acres	Contract	\$/AC	\$	Expires
5	3.80	12132A	\$154.70	\$587.86	2030
7	2.06	12132A	\$154.70	\$318.68	2030
9	2.20	12132A	\$154.70	\$340.34	2030
11	1.30	11241	\$277.59	\$360.87	2031
10	3.68	10142A	\$195.84	\$720.69	2023
13	0.60	12132A	\$154.70	\$92.82	2030
14	5.78	10142A	\$195.84	\$1,131.96	2023
15	11.18	11125A	\$302.19	\$3,378.48	2025
16	21.10	10142A	\$195.84	\$4,132.22	2023
17	7.28	11125A	\$302.19	\$2,199.94	2025
18	4.30	10142A	\$195.84	\$842.11	2023
27	1.00	12132A	\$154.70	\$154.70	2030
28	4.62	12132A	\$154.70	\$714.71	2030
29	3.22	12132A	\$154.70	\$498.13	2030
30	4.22	12132A	\$154.70	\$652.83	2030
33	0.50	12132A	\$154.70	\$77.35	2030
34	6.05	12132A	\$154.70	\$935.94	2030
36	2.60	12132A	\$154.70	\$402.22	2030
38	0.50	12132A	\$154.70	\$77.35	2030
39	2.10	12132A	\$154.70	\$324.87	2030
42	0.80	12132A	\$154.70	\$123.76	2030
43	1.20	11241	\$277.59	\$333.11	2031
46	1.60	11241	\$277.59	\$444.14	2031
48	4.73	11125A	\$302.19	\$1,429.36	2025
49	2.40	11241	\$277.59	\$666.22	2031
50	1.10	12132A	\$154.70	\$170.17	2030
66	1.20	11241	\$277.59	\$333.11	2031
101.12				\$21,443.95	

124.4 Acres					
Field	Acres	Contract	\$/AC	\$	Expires
5	2.68	12132A	\$154.70	\$414.60	2030
7	51.14	12132A	\$154.70	\$7,911.36	2030
8	5.80	12132A	\$154.70	\$897.26	2030
15	5.62	11125A	\$302.19	\$1,698.31	2025
25	11.40	10142A	\$195.84	\$2,232.58	2023
44	7.31	11125A	\$302.19	\$2,209.01	2025
45	1.76	12132A	\$154.70	\$272.27	2030
85.71			\$15,635.38		

Disclaimers: Farm Program Information for CRP is provided by the United States Department of Agriculture (USDA) offices. All field boundaries are taken from these and other sources believed by the seller and KILOTERRA to be accurate. Values included in statements and or published marketing including but not limited to the conservation plan, gross acres, total crop acres, FSA acres, base acres, and CSR2 ratings, are believed to be reliable and are estimates by the seller and KILOTERRA. However, it is expressed that this information is subject to change if/when the farm is reconstituted by the Guthrie County FSA and NRCS offices and prospective Buyers acknowledge that these values may vary from figures stated within marketing material.