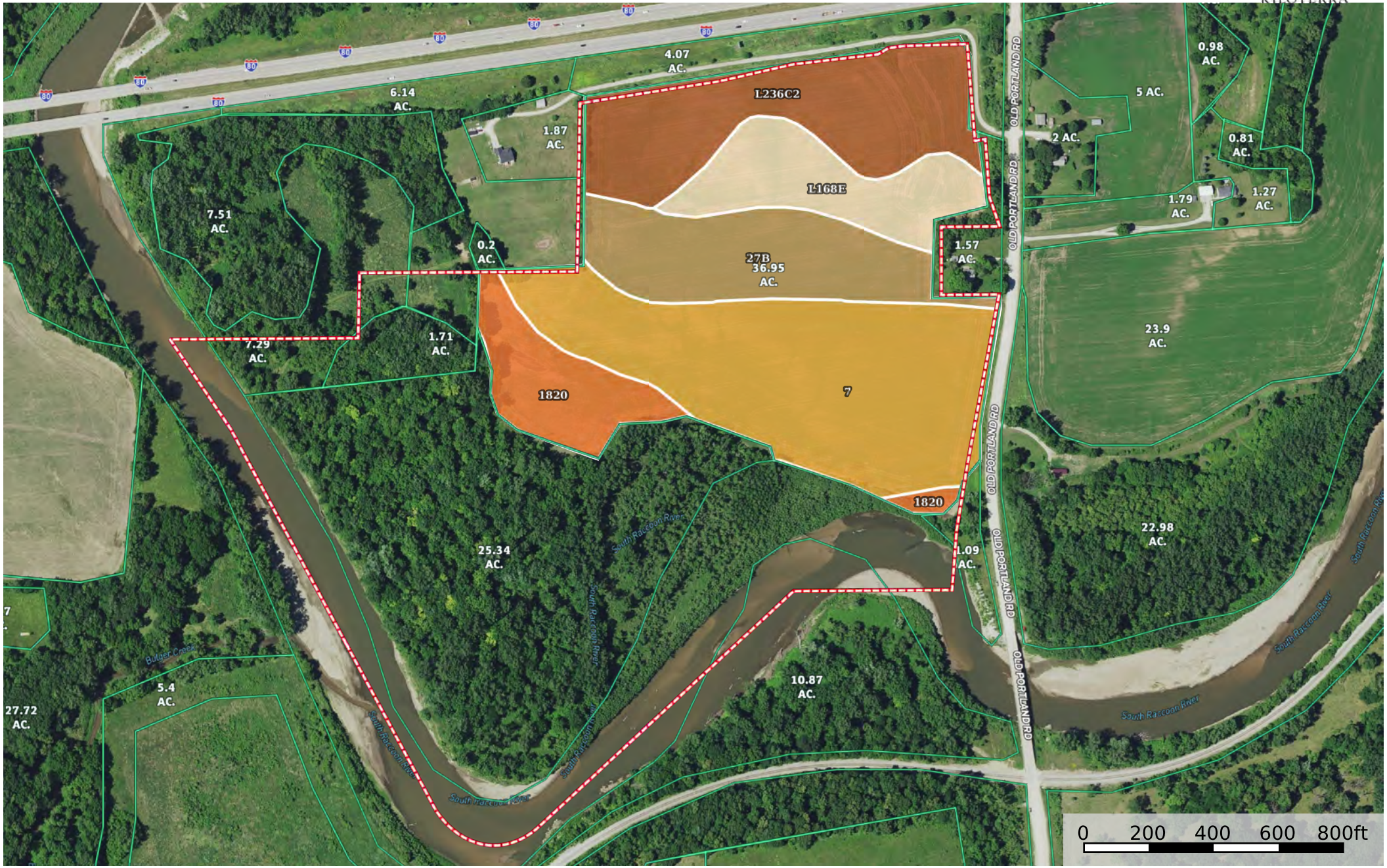


# Van Meter Farm with Development Potential & River

Dallas County, Iowa, 80.28 AC +/-



Boundary

|  Boundary 36.9 ac

SOIL CODE	SOIL DESCRIPTION	ACRES	%	CSR2	CPI	NCCPI	CAP
7	Wiota silt loam, 1 to 3 percent slopes	13.9	37.67	95.0	0	97	1
L236C2	Lester loam, Bemis moraine, 6 to 10 percent slopes, moderately eroded	8.26	22.38	77.0	0	72	3e
27B	Terril loam, 2 to 6 percent slopes	6.34	17.18	87.0	0	91	2e
L168E	Hayden loam, Bemis moraine, 10 to 22 percent slopes	4.54	12.3	45.0	0	77	4e
1820	Dockery-Quiver silt loams, 0 to 2 percent slopes, occasionally flooded	3.86	10.46	87.0	0	94	2w
TOTALS		36.9(*)	100%	82.61	-	87.6	2.09

(\*) Total acres may differ in the second decimal compared to the sum of each acreage soil. This is due to a round error because we only show the acres of each soil with two decimal.

