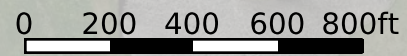
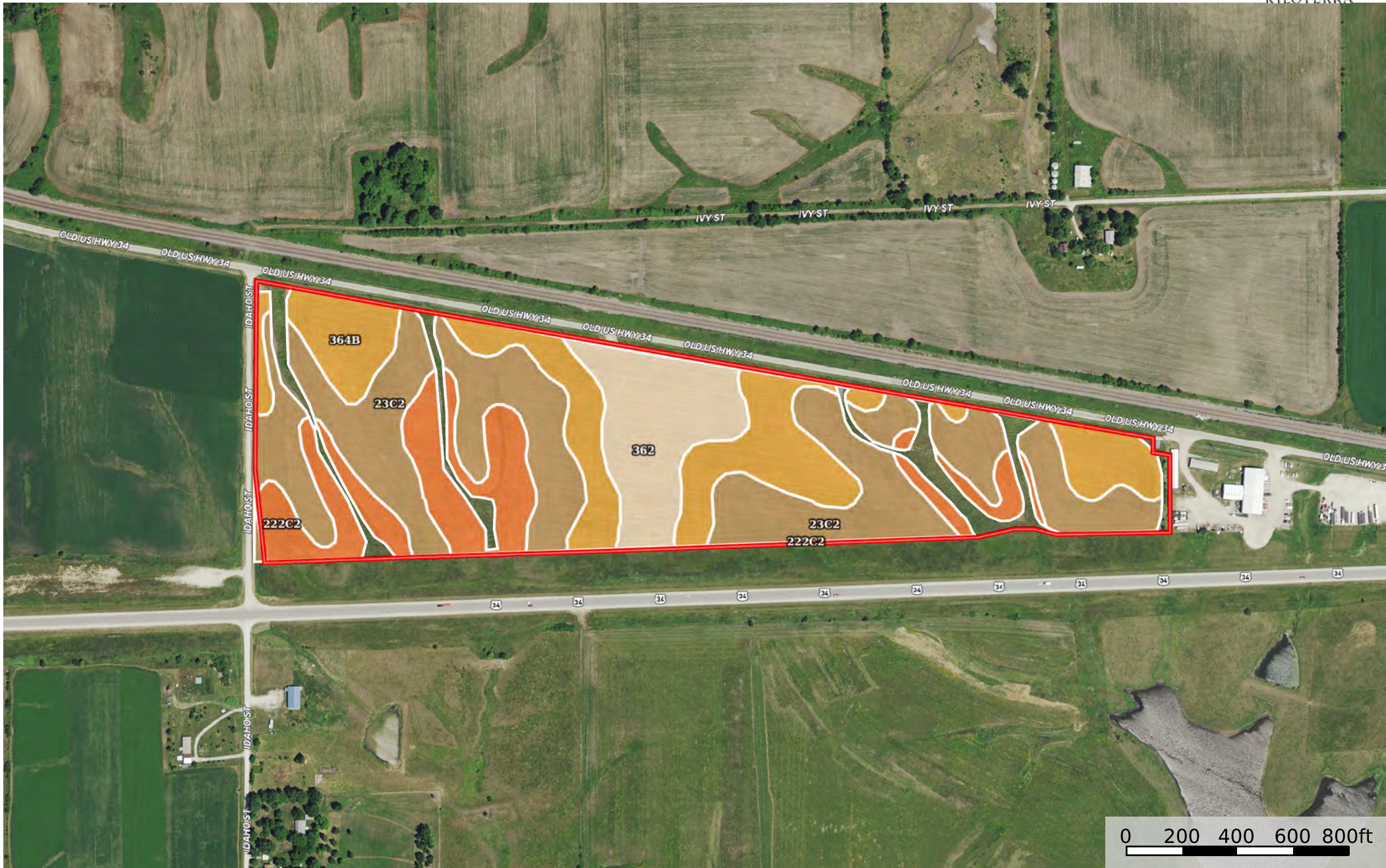


CRE - HWY 34 Farm

Clarke County, Iowa, 50.05 AC +/-



 Boundary

Boundary 45.98 ac

SOIL CODE	SOIL DESCRIPTION	ACRES	%	CSR2	CPI	NCCPI	CAP
23C2	Arispe silty clay loam, 5 to 9 percent slopes, moderately eroded	19.95	43.38	62.0	0	76	3e
364B	Grundy silty clay loam, 2 to 5 percent slopes	12.1	26.31	72.0	0	80	2e
222C2	Clarinda silty clay loam, 5 to 9 percent slopes, moderately eroded	8.08	17.57	28.0	0	52	4w
362	Haig silt loam, 0 to 2 percent slopes	5.85	12.72	83.0	0	75	2w
TOTALS		45.98(*)	100%	61.32	-	72.69	2.79

(*) Total acres may differ in the second decimal compared to the sum of each acreage soil. This is due to a round error because we only show the acres of each soil with two decimal.

